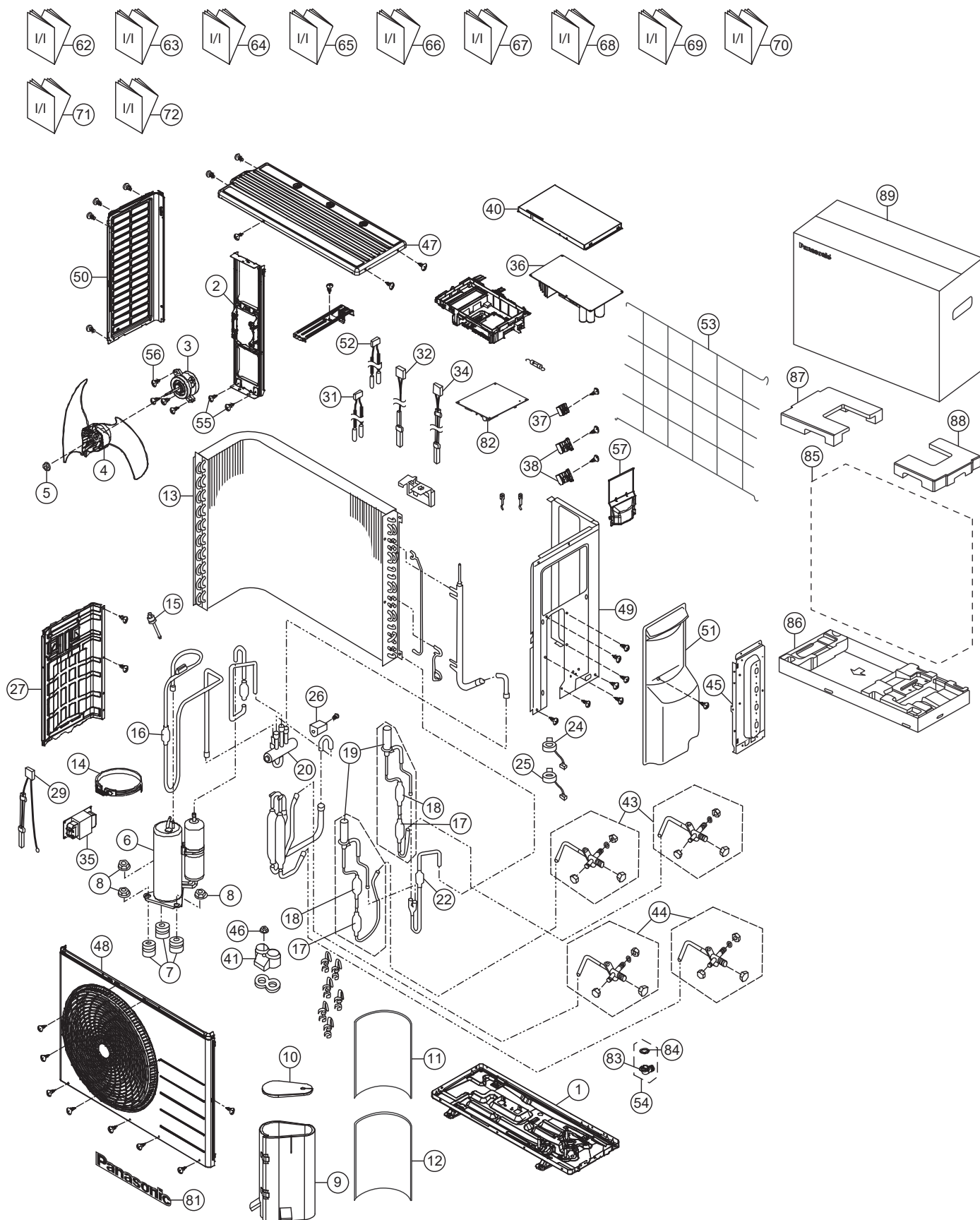


## 20. Exploded View and Replacement Parts List



### Note

The above exploded view is for the purpose of parts disassembly and replacement.  
The non-numbered parts are not kept as standard service parts.

SAFETY	NO.	DESCRIPTION & NAME	Q'TY	CU-2TZ41TBE	CU-2TZ50TBE	REMARK
	1	CHASSIS ASSY	1	CWD52K1399	←	
	2	FAN MOTOR BRACKET	1	CWD541157	←	
⚠	3	FAN MOTOR	1	L6CBYYYYL0218	←	O
	4	PROPELLER FAN ASSY	1	CWH03K1100	←	
	5	NUT - PROPELLER FAN	1	CWH56053J	←	
⚠	6	COMPRESSOR	1	9RD132XFA21	←	O
	7	ANTI - VIBRATION BUSHING	3	CWH50077	←	
	8	NUT - COMPRESSOR MOUNT	3	CWH561096	←	
	9	SOUND PROOF MATERIAL (BODY)	1	ACXG30-08250	←	
	10	SOUND PROOF MATERIAL (TOP)	1	ACXG30-08260	←	
	11	SOUND PROOF MATERIAL	1	ACXG30-08450	←	
	12	SOUND PROOF MATERIAL	1	ACXG30-08460	←	
	13	CONDENSOR CO.	1	ACXB32C15170	←	
	14	CRANKCASE HEATER	1	CWA341044	←	
	15	HEATING PRESSURE SWITCH	1	CWA101013	←	
	16	DISCHARGE MUFFLER	1	CWB121010	←	
	17	DISCHARGE MUFFLER	2	ACXB12-00610	←	
	18	STRAINER	2	CWB111024	←	
	19	EXPANSION VALVE	2	CWB051029	←	
	20	4 - WAYS VALVE	1	CWB001064	←	O
	22	STRAINER	1	CWB111080	←	
	24	V - COIL COMPLETE (CN-EV1 WHITE)	1	CWA43C2579	←	O
	25	V - COIL COMPLETE (CN-EV2 YELLOW)	1	CWA43C2580	←	O
	26	V - COIL COMPLETE (4 - WAY VALVE)	1	CWA43C2585	←	O
	27	SOUND PROOF BOARD	1	ACXH15-02430	←	
	29	SENSOR - COMPLETE (AIR TEMP SENSOR CN-TH1)	1	ACXA50C14060	←	O
	31	SENSOR - COMPLETE (GAS PIPE TEMP CN-TH4)	1	ACXA50C14080	←	O
	32	SENSOR - COMPLETE (DEFROST SENSOR CN-TH2)	1	ACXA50C14070	←	O
	34	SENSOR - COMPLETE - TANK	1	CWA50C2632	←	O
	35	REACTOR	1	G0C392J00035	←	O
⚠	36	ELECTRONIC CONTROLLER - MAIN	1	ACXA73C42190R	ACXA73C42200R	O
⚠	37	TERMINAL BOARD ASSY (L, N)	1	CWA28K1162	←	O
⚠	38	TERMINAL BOARD ASSY (1, 2, 3)	2	CWA28K1161	←	O
	40	CONTROL BOARD COVER	1	ACXH13-00450	←	
	41	TERMINAL COVER	1	CWH171039A	←	
	43	3 - WAYS VALVE (LIQUID)	2	CWB011418	←	O
	44	3 - WAYS VALVE (GAS)	2	CWB011081J	←	O
	45	HOLDER COUPLING	1	ACXH35-01450	←	
	46	NUT - TERMINAL COVER	1	CWH7080300J	←	
	47	CABINET TOP PLATE	1	CWE031230A	←	

SAFETY	NO.	DESCRIPTION & NAME	Q'TY	CU-2TZ41TBE	CU-2TZ50TBE	REMARK
	48	CABINET FRONT PLATE CO.	1	CWE06C1566	←	
	49	CABINET SIDE PLATE CO.	1	ACXE04C05760	←	
	50	CABINET SIDE PLATE (LEFT)	1	CWE041858A	←	
	51	CONTROL BOARD COVER - COMPLETE	1	ACXH13C04680	←	
	52	SENSOR - COMPLETE (LIQUID PIPE TEMP CN-TH3)	1	ACXA50C14090	←	O
	53	WIRE NET. RESIN NET	1	ACXD04-00040A	←	
	54	BAG - COMPLETE	1	CWG87C900	←	
	55	SCREW - BRACKET FAN MOTOR	2	CWH551217	←	
	56	SCREW - FAN MOTOR MOUNT	4	CWH55252J	←	
	57	CONTROL BOARD COVER	1	CWH131595	←	
	62	INSTALLATION INSTRUCTION	1	ACXF60-29180	←	
	63	INSTALLATION INSTRUCTION	1	ACXF60-29190	←	
	64	INSTALLATION INSTRUCTION	1	ACXF60-29200	←	
	65	INSTALLATION INSTRUCTION	1	ACXF60-29210	←	
	66	INSTALLATION INSTRUCTION	1	ACXF60-29220	←	
	67	INSTALLATION INSTRUCTION	1	ACXF60-29230	←	
	68	INSTALLATION INSTRUCTION	1	ACXF60-29240	←	
	69	INSTALLATION INSTRUCTION	1	ACXF60-29250	←	
	70	INSTALLATION INSTRUCTION	1	ACXF60-29260	←	
	71	INSTALLATION INSTRUCTION	1	ACXF60-29270	←	
	72	INSTALLATION INSTRUCTION	1	ACXF60-29280	←	
	81	BADGE PANASONIC	1	CWE373439	←	
	82	ELECT. CONT. (NOISE FILTER)	1	ACXA73-22700	←	
	83	L - TUBE	1	CWH5850080	←	
	84	PACKING L - TUBE	1	CWB81012	←	
	85	BAG	1	CWG861078	←	
	86	BASE BOARD COMPLETE	1	CWG62C1223	←	
	87	SHOCK ABSORBER (L)	1	CWG713779	←	
	88	SHOCK ABSORBER (R)	1	CWG713778	←	
	89	C.C. CASE	1	ACXG50-06590	←	

(Note)

- All parts are supplied from PAPAMY, Malaysia (Vendor Code: 00029488).
- "O" marked parts are recommended to be kept in stock.